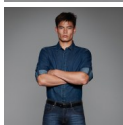


799.42 | ?????????? denim



????????????: ??? ?????????????? ??????
?????:

33,80 €

[????????? ??? ?? ????????](#)

?????????

Denim Twill

- 100% cotton
- 6.5 oz
- S, M, L, XL, XXL
- 1 pc/pack & 20 pcs/carton

• Denim long-sleeved Shirt

- .Denim twill 100% cotton (garment wash)
- .Straight cut
- .Cut-away collar
- .Tone-on-tone decorative multistitch lines on the back of the collar
- .Tone-on-tone buttons
- .Fashionable half-hidden button placket
- .Long sleeves - and for an even more casual look use the sleeve tab to roll-up the sleeves
- .Accessory button in antique brass on the left gauntlet giving the shirt its individual look
- .Decorative triple needle topstitched straight yoke at chest and back
- .Horizontal last buttonhole
- .Bottom sides reinforced with reverse denim
- .Curved bottom hem