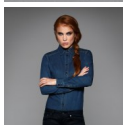


797.42 | B&C DNM Vision /women



?????????: ??? ?????????????? ?????
????:

29,30 €

[??????? ??? ?? ??????](#)

?????????

Denim Twill

- 100% cotton
- 6.5 oz
- XS, S, M, L, XL, XXL
- 1 pc/pack & 20 pcs/carton

• Denim long-sleeved Shirt

- .Denim twill 100% cotton (garment wash)
- .Long sleeves with 2-button cuffs
- .Darts at bustline & back panel for a feminine shape
- .Feminine collar with an extended flap on first button & reversed denim mini-patch to reinforce the DNM RAW look
- .Back collar made of 2 parts for vintage look
- .Tone-on-tone buttons
- .Button placket with tone-on-tone zigzag stitch for a DNM RAW look
- .Accessory button in antique brass on the left gauntlet giving the shirt its individual look
- .Decorative double needle topstitched yoke at front shoulder
- .Bottom sides with gusset (in reverse denim)
- .Curved bottom hem
- .Decorative features made to feel good from casual chic to urban look